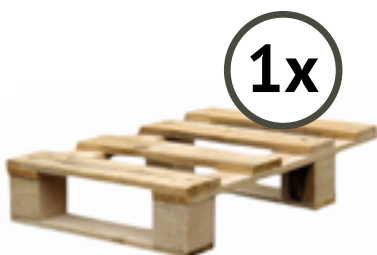


assembly instructions | Aufbauanleitung | instructions de montage | instrucciones de montaje

content | Inhalt | contenu | contenido



additionally needed | zusätzlich benötigt |
élément requis supplémentaire | se requiere adicionalmente

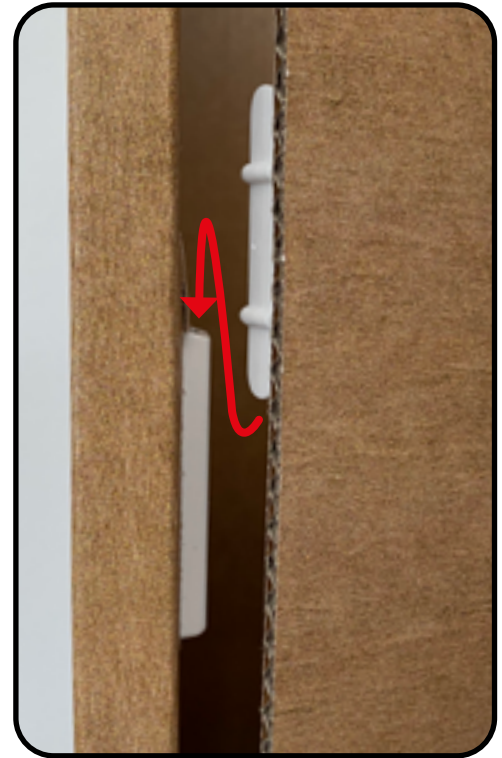


1/4
pallet | Palette | de palette | pallet

STEP 1



STEP 2



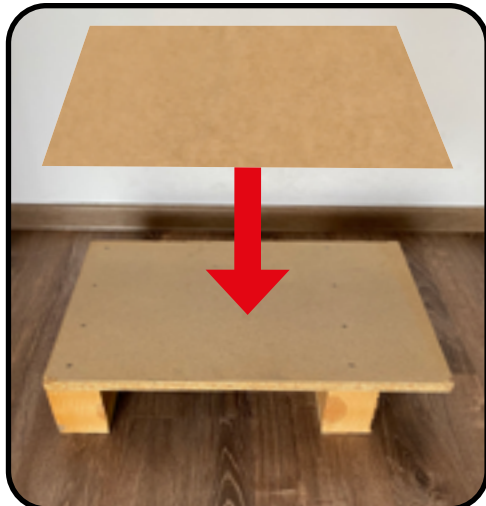
STEP 3



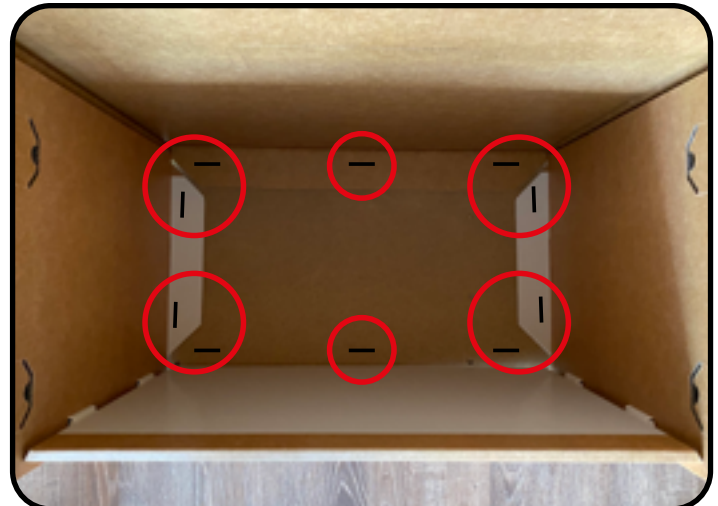
STEP 4



STEP 5




STEP 6

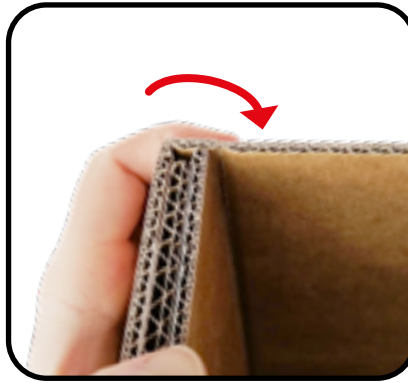


 remove | entfernen | retirer | quitar

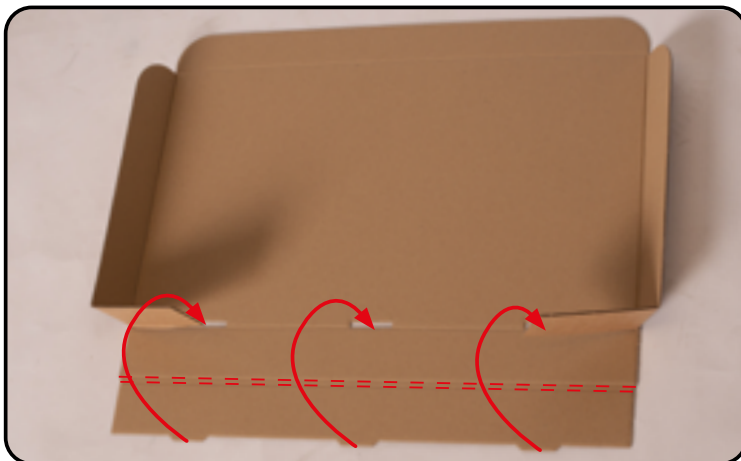
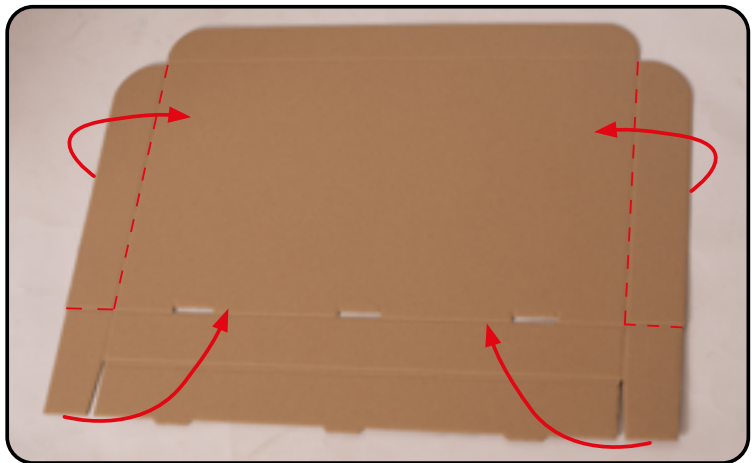
- - - fold | umknicken | plier | doblar

 staple | tackern | agrapher | engrapar

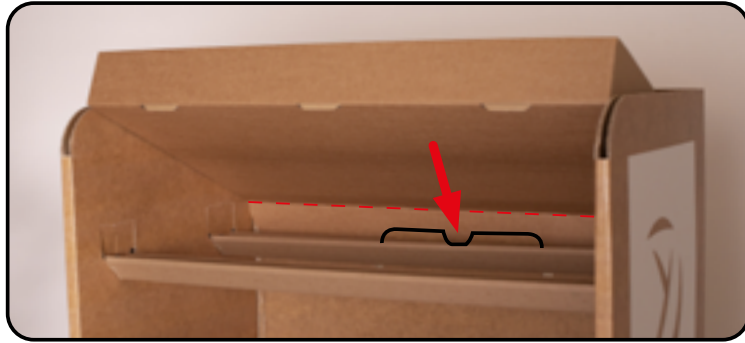
STEP 7



STEP 8



STEP 9




STEP 10 - 3 Trays



 remove | entfernen | retirer | quitar

 fold | umknicken | plier | doblar

 staple | tackern | agrapher | engrapar

STEP 10 - 4 Trays




STEP 11



 remove | entfernen | retirer | quitar

- - - fold | umknicken | plier | doblar

 staple | tackern | agrapher | engrapar